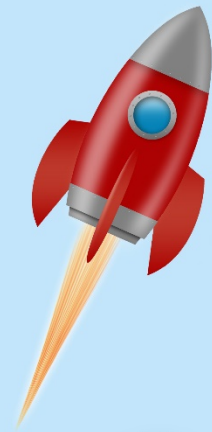


ROCKET RELAUNCH



Reopening Plan for Families Rockcastle County Schools 2020-2021

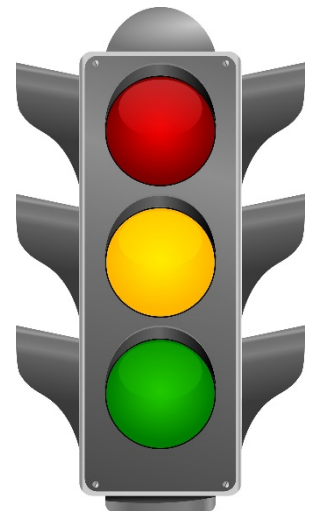
OVERVIEW:

The Rockcastle County Board of Education has designed our reopening plan to ensure the health, safety, and well-being of all students, staff, and families. Our plan was developed in coordination with local health officials, guidance from the Kentucky Department of Education and district Task Force Committees, comprised of district and school staff, parents, students and community members. This plan is tentative, and any updates will be shared with our families on our district website and through social media.

THREE LIGHT SYSTEM:

While in a state of emergency for the 2020-2021 school year, our district will follow the Three Light System, in collaboration with our local health department:

- **GREEN LIGHT**: Extremely low statewide transmission rates and/or no cases within our community
- **YELLOW LIGHT**: Low/stable statewide transmission rates and/or minimal cases in our community
- **RED LIGHT**: Increasing statewide transmission and/or substantial cases within community and/or government mandates to stop in-person classes



Local and state health officials will determine our light status, and our district will communicate that information with our families as soon as possible.

LEARNING OPTIONS:

Rockcastle County Schools will provide two learning options for students (in-person classes or *MyRock Online*). The details of each option are outlined below.

OPTION 1: IN-PERSON LEARNING (GREEN and YELLOW)

Health and Safety for All:

- Signage of best practices for healthy hygiene will be posted throughout the school.
- Proper cleaning and sanitation procedures of our schools and buses will occur throughout the school day and evening.
- Playground equipment will be available to students on schedules and sanitized between usages. Students will be provided with modified exercise and breaks. Students may bring water from home or use the water bottle filling stations. Water fountains will not be available.
- Healthy Hygiene practices (including proper social distancing) will be taught to all students and staff and will be implemented during all school activities.
- Seating charts will be required in all areas.
- All students and staff will be required to have daily temperature checks.
- All students (1st-12th grade) and staff will be required to wear protective masks (unless medically waived) throughout the day (on the bus, in the hallways, in classes when social distancing is not possible, etc.). CDC guidelines and dress code apply to masks.
- Rockcastle County Schools will provide two (2) cloth masks to every student. If families are unable to provide additional protective masks for their children, disposable masks will also be available at our schools.
- Per Board Policy (09.213), any known or suspected causes of communicable diseases (COVID-19) must be reported immediately to the health department and to the school's principal or designee.
- Our district will follow the guidance from local health and state officials on contact tracing and quarantine procedures.

Quality Teaching and Learning:

- Every student will take a pre-assessment at the beginning of the school year to determine academic progress.
- Teachers will work with students to master grade-level priority standards and to accelerate foundational academic skills.
- Teachers will implement project-based learning and personalized learning, during periods of closure due to COVID-19.
- Our district will utilize Google Suite Tools, including Google Classroom, for K-12 to assist with NTI due to school closure instruction, as needed.

Supporting Exceptional Learners:

- Rockcastle County Schools' staff will take extra precautions to protect any student at high risk for severe illness.
- Special education referrals, evaluations, re-evaluations, ARC meetings, etc. will continue. If in YELLOW or RED, meetings will be held virtually.
- Students' Individualized Education Program (IEPs) as well as Gifted Service Plans (GSPs) will be followed to ensure students' needs are met and that they have access to all necessary resources to the greatest extent possible.



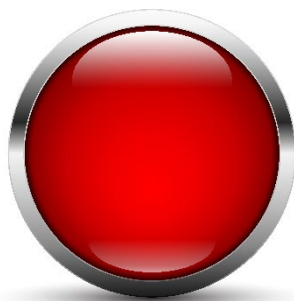
Green Light Specifics:

- Parents, visitors and volunteers will need to make appointments prior to coming to campus. Please contact the office of your school to schedule your visit or volunteer work. Lobby/office areas will have limited access.
- Visitors will be required to wear protective masks, have temperatures checked, and remain in the front office.
- During all school/district activities, social distancing, protective masks requirements, etc. must be followed by all stakeholders.
- District events will follow KHSAA/KMEA guidelines.



Yellow Light Specifics:

- Students will eat in an area that meets the social distancing requirements.
- Visitors will not be allowed in the building.
- Each school will communicate a plan with families on “curbside” service, such as pick-up/drop-off of students.
- For elementary and middle schools, students will remain with the same group of students throughout the entire day as much as possible.
- Modified schedules, with staggered times will be implemented at each school as needed to reduce the number of students moving around during transitions.
- Middle and high school extracurricular activities will be governed by KHSAA/KMEA guidelines.
- K-5 extracurricular and non-critical activities will be suspended. (Example: sports, clubs and after school tutoring)
- No out-of-building/school-related trips, unless approved by the Superintendent.



Red Light Specifics:

- All in-person classes will be dismissed, and NTI, due to school closure, will begin.
- Each school will communicate NTI plans.
- NTI instruction may include the use of online learning platforms, Google classroom, virtual class meetings, teacher check-ins, etc.
- Food pick-up will be implemented.
- All school-related activities will be cancelled.

OPTION 2: MyRock Online (GREEN, YELLOW OR RED)

- Before the start of school, families may decide if their children will attend in-person classes or participate in the MyRock Online Virtual School. A school intent form and online registration will be available for families to complete.
- Once the state of emergency is lifted, MyRock Online students will transition back to in-person learning.
- Families must have adequate internet access and actively participate in all requirements of MyRock Online provided by Rockcastle County staff members.
- Students with IEPs will receive special education services outlined in their IEPs to the greatest extent possible.
- Food service pick-up will be available upon request for students participating in virtual learning.
- If families wish for their students to return to in-person classes, our district requires doing so at the start of an eighteen week period (new semester).
- Our district’s virtual learning academy (MyRock Online) is different than NTI due to school closure, as outlined in the chart below:

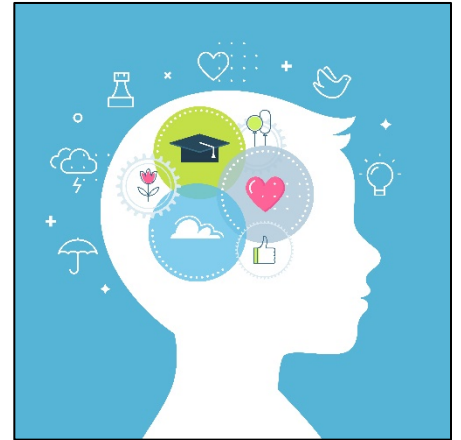


	MyRock Online	NTI (Non-Traditional Instruction)
Basic Definition	A virtual school that students can attend in place of traditional in-person instruction. Follows the same calendar as the district and has set hours for the students to attend online meetings and participate in virtual classes.	A type of instruction used by a group, school or district when necessary (ex. Inclement weather or widespread illness) as a means to provide instruction so that make up days are not added to the calendar.
Student Enrollment	Only students enrolled in MyRock Online attend this online school.	At any point during the year, any or all RCS students might be asked to participate in NTI due to school closure.
Teachers	Specific teachers may be assigned to teach students from across the district through MyRock Online.	All RCS teachers will be expected to teach during NTI days. Your child’s in-person teacher(s) would be the NTI teacher.
Curriculum & Instruction	Instruction through MyRock Online will be at the same pace and have similar expectations as in-person instruction.	During short periods of NTI, students will primarily review content already learned during in-person instruction. For longer periods of NTI, the expectations will be the same as in-person learning.

Mental Health Matters

Rockcastle County educators know our students and families are experiencing stress and confusion about what school may look like for the 20-21 school year. Please know your child's well-being and mental health are very important to us.

- We will continue our partnerships with Somerset Mental Health at all schools and Telehealth Services with RockPeds at RCMS and RCHS.
- We will use innovative strategies to ensure positive relationships, student engagement, and academic growth for each student of Rockcastle County.
- We will continue to create school cultures that are friendly, welcoming, helpful, non-judgmental and caring.
- We will provide personalized supports to students who may be struggling with the transition back to school.



We Appreciate Our Families

We know things will be different for the 20-21 school year, but our focus to provide the best education for each student will remain the same.

Thank you for your continued support, and we look forward to a great school year.

For more detailed information, please reference [KDE's COVID-19 Webpage](#).